

**RAY-RAN**

# POLYTEST

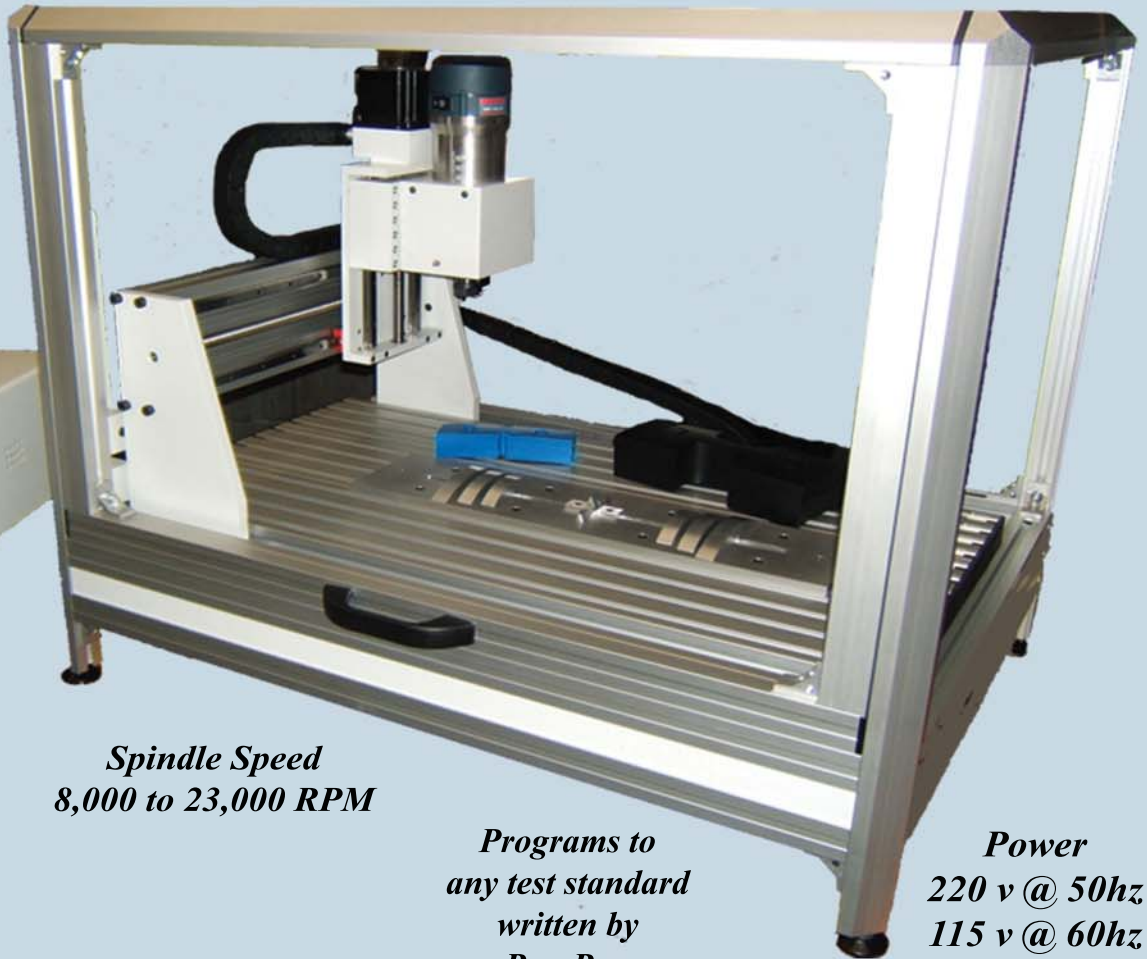
*New Large CNC Model 2 Profile Cutter*

*Software includes  
Drop Down Menus  
& 3D Graphical  
Display*

*1/2" & 1/4" Collets  
Supplied*

*Safety Cabinet  
Enclosure*

*Table Size  
900mm 300mm*



*XYZ Axis  
X = 600mm  
Y = 300mm  
Z = 125mm*

*Spindle Speed  
8,000 to 23,000 RPM*

*Programs to  
any test standard  
written by  
Ray-Ran*

*Power  
220 v @ 50hz  
115 v @ 60hz*



Certificate No. 4915

## World Wide Testing for Quality

Kelsey Close Attleborough Fields Industrial Estate  
Nuneaton Warwickshire CV11 6RS United Kingdom  
Telephone : +44 (0)24 7634 2002 Fax : +44 (0)24 7664 1670

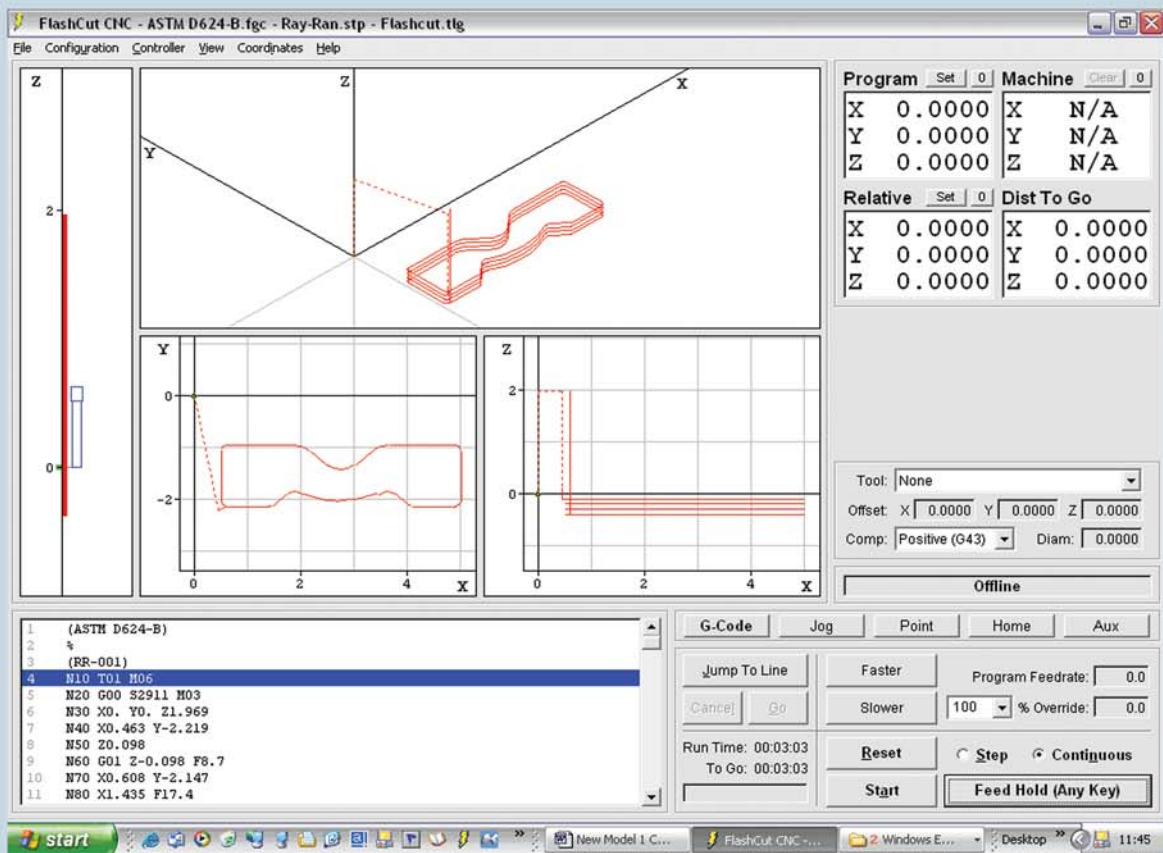
[www.ray-ran.com](http://www.ray-ran.com) email : [polytest@ray-ran.com](mailto:polytest@ray-ran.com)



*The above photographs show samples cut with the Model 2 CNC, under actual test conditions*

A vertical desktop CNC milling machine for rapid prototyping and production of laboratory test samples from thick sheet material or Pipe sections up to 65mm thick Supplied as standard with a USB interface for a personal computer or laptop, and versatile but user friendly Windows Flashcut CNC PC software. FlashCut CNC is the industry leader in powerful, easy-to-use, affordable CNC controls. The Software and USB Signal Generator package forms the cornerstone of the FlashCut CNC product line and this comes as standard fitted to all of Ray-Ran CNC machines. With a simple installation, it easily turns any Windows-based PC into a CNC controller

FlashCut uses G-Code instructions to control your machine tool to make 3-D and 2-D parts. For creating simple 2-D parts, (parts with consistent XY cross sections) FlashCut can automatically translate a DXF file into industry standard G-Code without the use of CAM. If the part has complex 3-D surfaces, you will need a CAM program to generate the G-Code. CAM programs integrate directly with CAD packages so that you do not have to reenter your geometry. Popular CAM programs include MasterCam, SurfCam, Gibbs, DeskProto, BobCad/Cam, Vector, Visual Mill, X-CAM, and Rams among others.



*Computer Screenshot showing Flashcut Software interface*



**Kelsey Close Attleborough Fields Industrial Estate  
 Nuneaton Warwickshire CV11 6RS United Kingdom  
 Telephone : +44 (0)24 7634 2002 Fax : +44 (0)24 7664 1670  
[www.ray-ran.com](http://www.ray-ran.com) email : [polytest@ray-ran.com](mailto:polytest@ray-ran.com)**