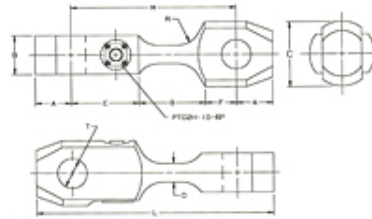


Strainert Co.

12 Union Hill Rd., West Conshohocken
 PA , 19428 , US
 Phone: 610-825-3310
 Fax: 610-825-1734
 Email: info@strainert.com
 Website: http://www.strainert.com

STL Series, Force Sensing Tension Links for Anchor and Chain Shackles

All Tension Links can be fit with a permanently attached cable.
 Model STL-13.5(SS)X shown.

**Results 1 - 18 of 18**

Item #	Load Capacity	Material	Shackle Size	L - Overall Length	Weight	Safety Factor	CAD
STL-0.75 AL X	1500 lb	Aluminum Alloy 7075-T6, Hard Coat Finish: Rockwell C-60	5/16 Inch	5 in	1 lb	4.2	102249
STL-1 AL X	2000 lb	Aluminum Alloy 7075-T6, Hard Coat Finish: Rockwell C-60	3/8 Inch	5-3/8 in	1 lb	4.2	102249
STL-1.5 AL X	3000 lb	Aluminum Alloy 7075-T6, Hard Coat Finish: Rockwell C-60	7/16 Inch	5-3/4 in	1 lb	4.2	102249
STL-2 AL X	4000 lb	Aluminum Alloy 7075-T6, Hard Coat Finish: Rockwell C-60	1/2 Inch	6-1/4 in	1 lb	4.2	102249
STL-3.25 AL X	6500 lb	Aluminum Alloy 7075-T6, Hard Coat Finish: Rockwell C-60	5/8 Inch	7-3/8 in	1 lb	4.1	102249
STL-4.75 SS X	9500 lb	Stainless Steel 17-4, H-1025 (Standard)	3/4 Inch	8-1/4 in	4 lb	3.0	102249
STL-6.5 SS X	13000 lb	Stainless Steel 17-4, H-1025 (Standard)	7/8 Inch	9 in	6 lb	3.0	102249
STL-8.5 SS X	17000 lb	Stainless Steel 17-4, H-1025 (Standard)	1 Inch	9-1/2 in	8 lb	3.0	102249
STL-9.5 SS X	19000 lb	Stainless Steel 17-4, H-1025 (Standard)	1-1/8 Inch	10-1/4 in	9 lb	3.0	102249

STL-12 SS X	24000 lb	Stainless Steel 17-4, H-1025 (Standard)	1-1/4 Inch	11 in	12 lb	3.0	102249
STL-13.5 SS X	27000 lb	Stainless Steel 17-4, H-1025 (Standard)	1-3/8 Inch	11-5/8 in	14 lb	3.0	102249
STL-30 SS X	60000 lb	Stainless Steel 17-4, H-1025 (Standard)	1-1/2 Inch	12 in	16 lb	3.0	102249
STL-40 SS X	80000 lb	Stainless Steel 17-4, H-1025 (Standard)	1-3/4 Inch	14-1/8 in	25 lb	3.0	102249
STL-50 SS X	100000 lb	Stainless Steel 17-4, H-1025 (Standard)	2 Inch	15-3/8 in	32 lb	3.0	102249
STL-80 SS X	160000 lb	Stainless Steel 17-4, H-1025 (Standard)	2-1/2 Inch	18-1/2 in	56 lb	3.0	102249
STL-110 SS X	220000 lb	Stainless Steel 17-4, H-1025 (Standard)	3 Inch	21-1/4 in	95 lb	3.0	102249
STL-140 SS X	280000 lb	Stainless Steel 17-4, H-1025 (Standard)	3-1/2 Inch	23-7/8 in	120 lb	3.0	102249
STL-175 SS X	350000 lb	Stainless Steel 17-4, H-1025 (Standard)	4 Inch	26-1/4 in	190 lb	3.0	102249

Results 1 - 18 of 18